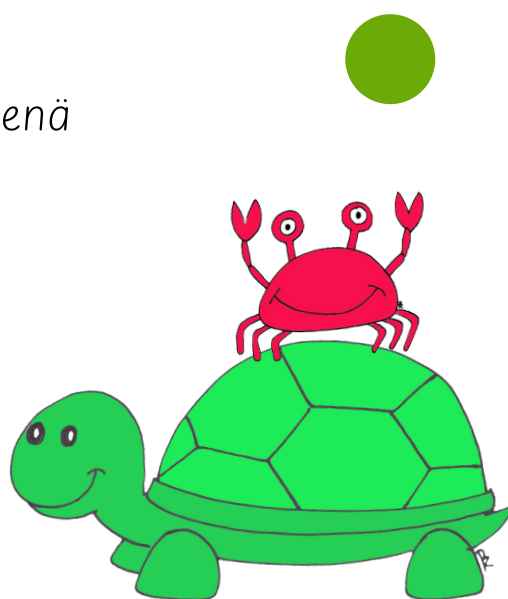


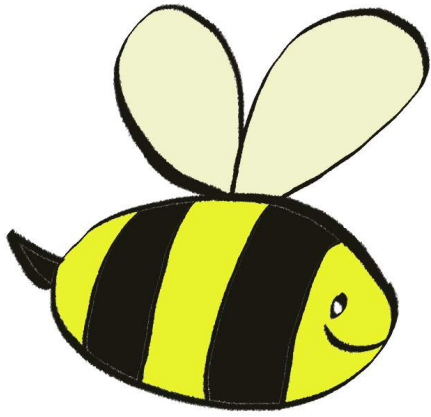
Ideoita eläinliikekorttien käyttöön:

Eläinliikekortit innostavat liikkumaan, mutta jättävät myös lapsen omalle oivaltamiselle ja keksimiselle sijaa käyttötapojen suhteen.

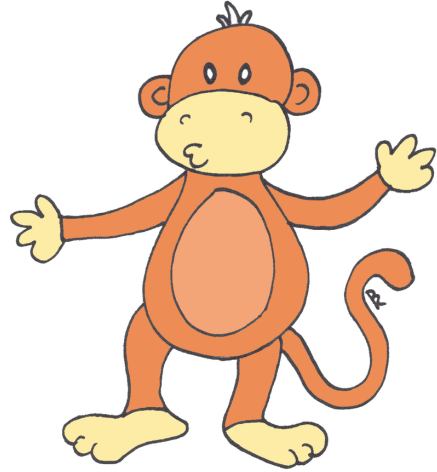
Eläinliikekortteja voit hyödyntää:

- Aamujumppana tai päivän liikkeenä
- Taskunopassa
- Liikuntatunnilla
- Taukoliikkeenä
- Liikuttamiseen tehtävien lomassa
- Suullisessa ilmaisussa ja nimeämisessä
- Tavuttamisessa ja kirjoittamisessa
- Mikä eläin minä olen? -arvausleikki esittämällä

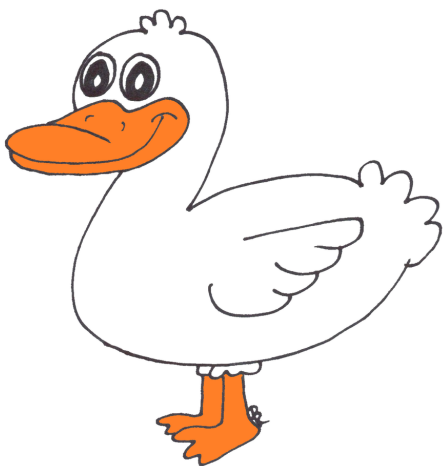




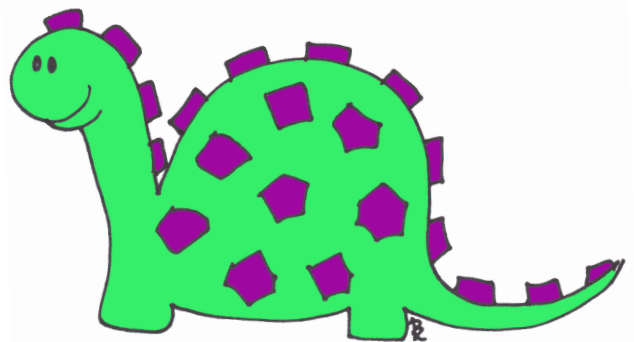
● Open Inno



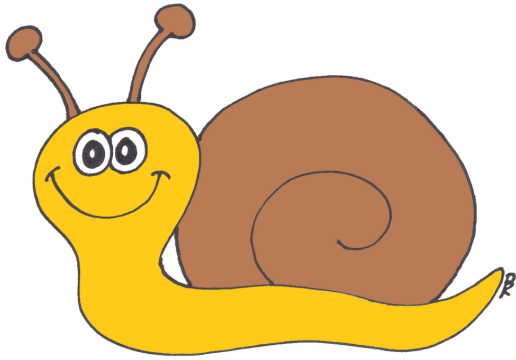
● Open Inno



● Open Inno



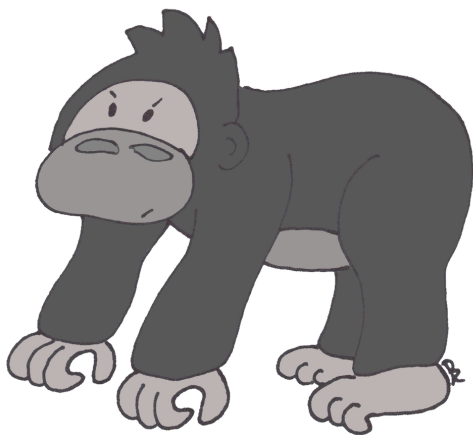
● Open Inno



● Open Inno



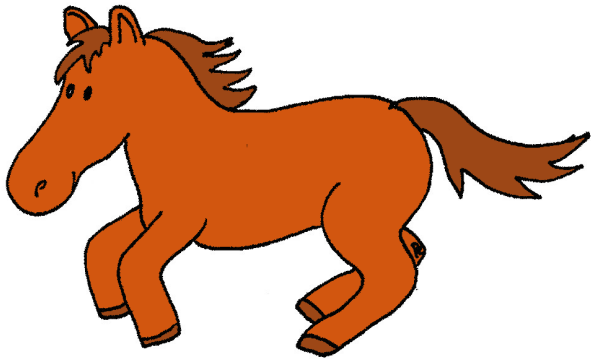
● Open Inno



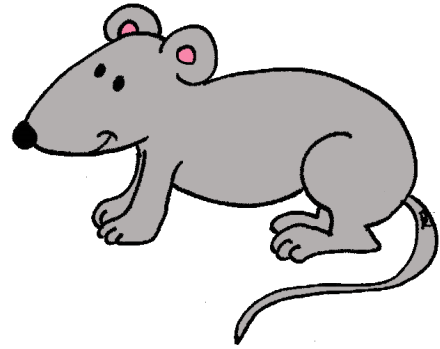
● Open Inno



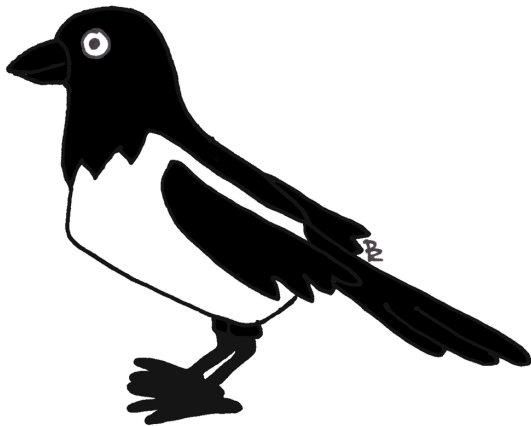
● Open Inno



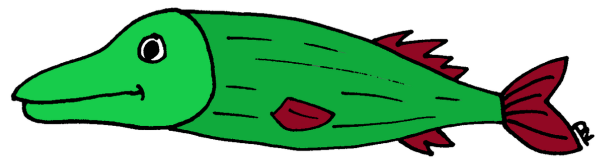
● Open Inno



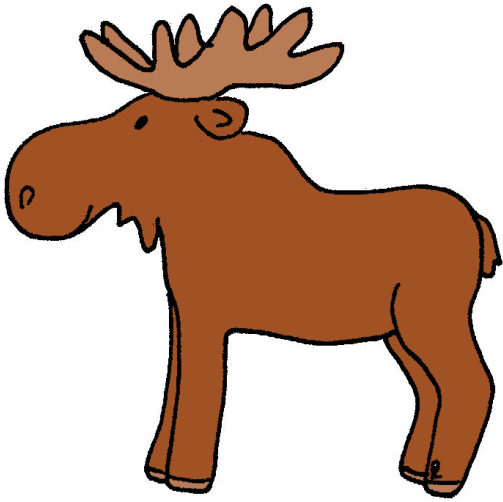
● Open Inno



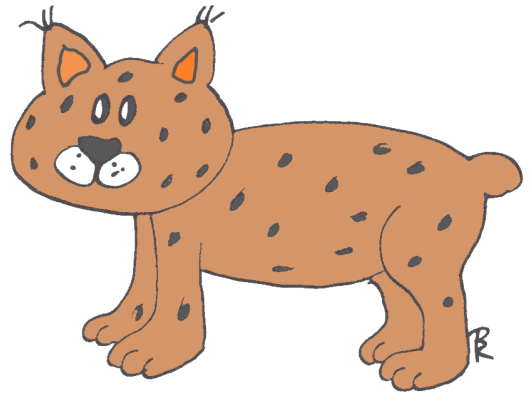
● Open Inno



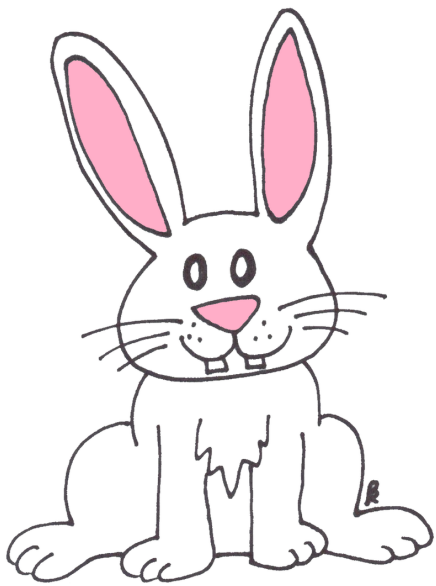
● Open Inno



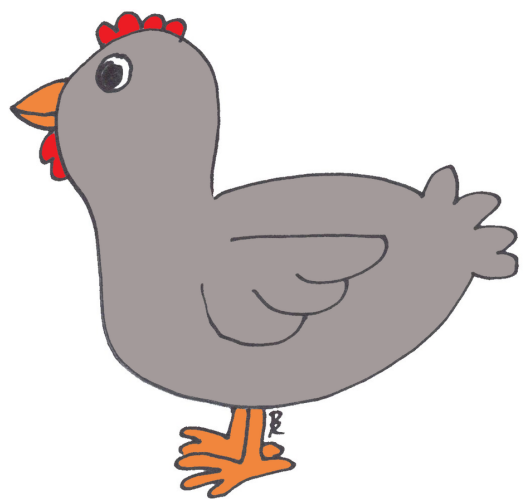
● Open Inno



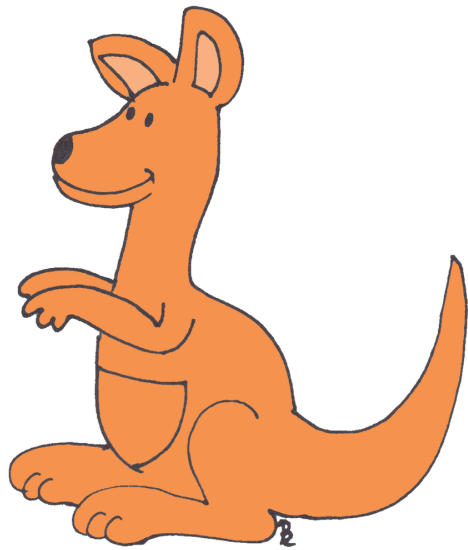
● Open Inno



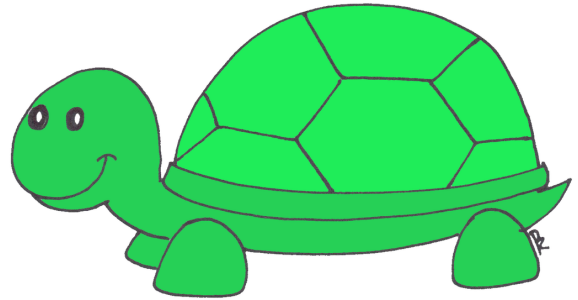
● Open Inno



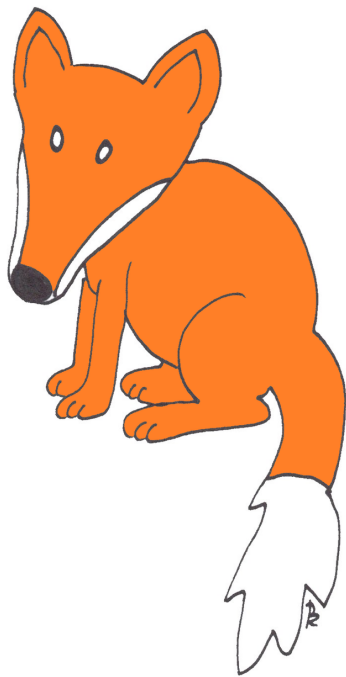
● Open Inno



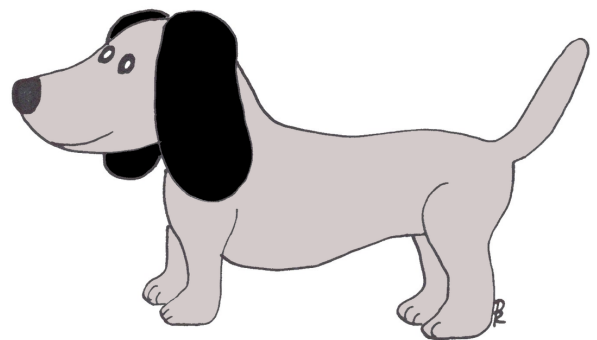
● Open Inno



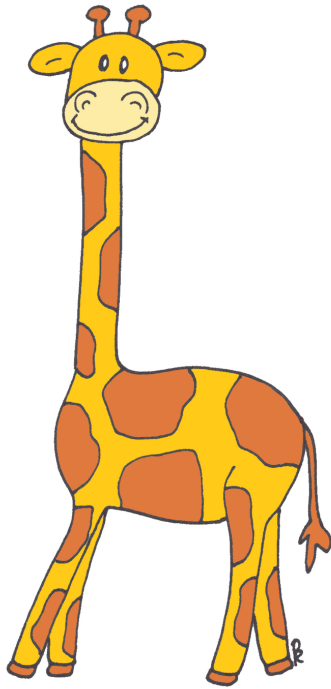
● Open Inno



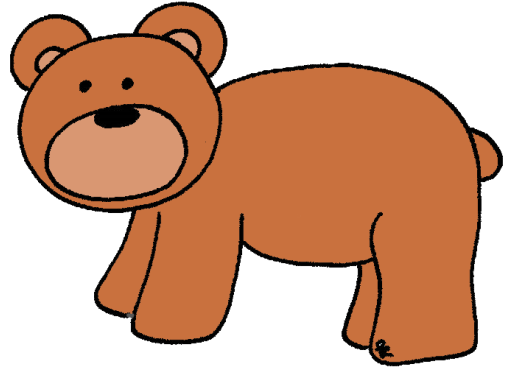
● Open Inno



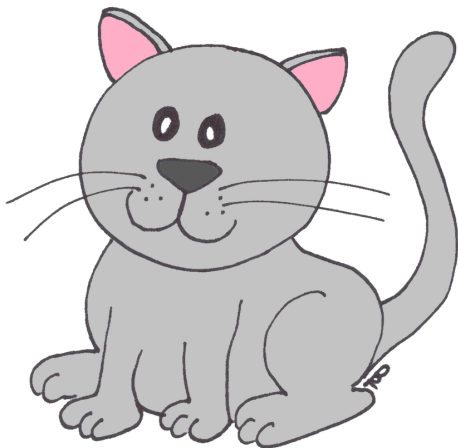
● Open Inno



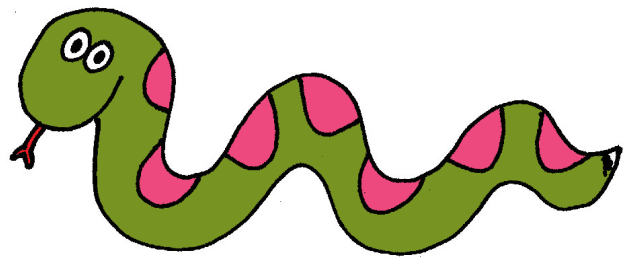
● Open Inno



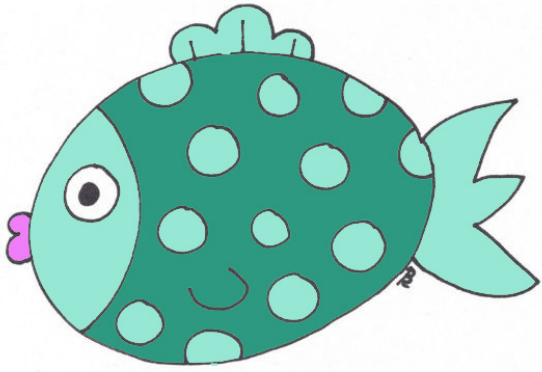
● Open Inno



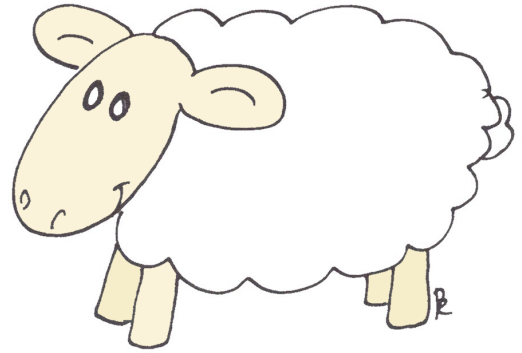
● Open Inno



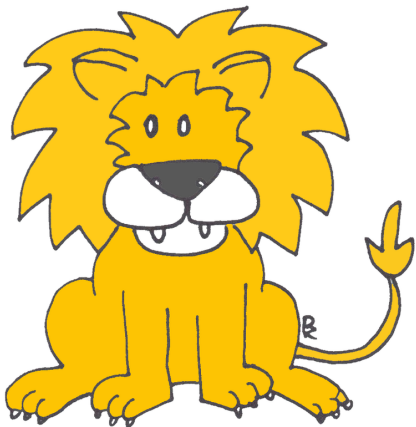
● Open Inno



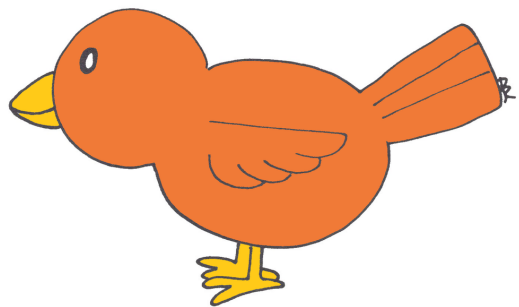
● Open Inno



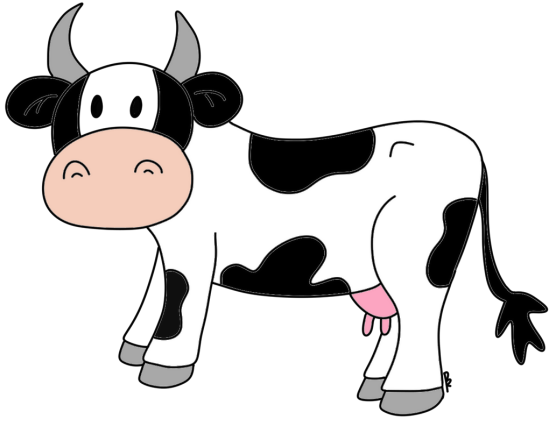
● Open Inno



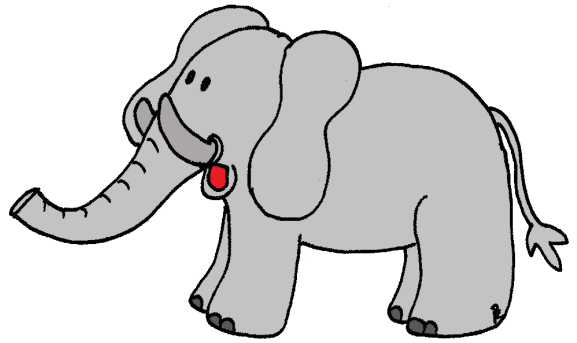
● Open Inno



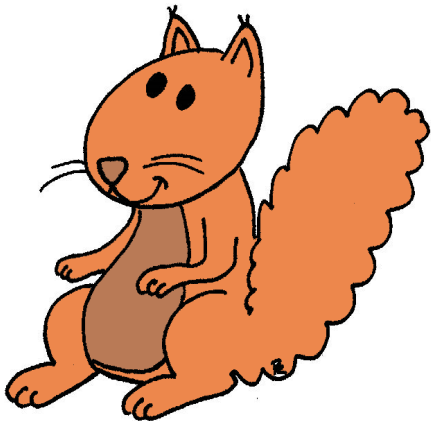
● Open Inno



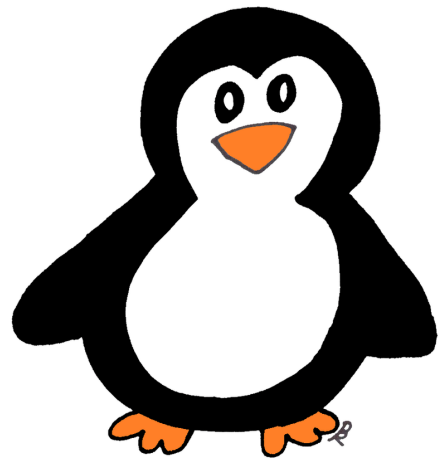
● Open Inno



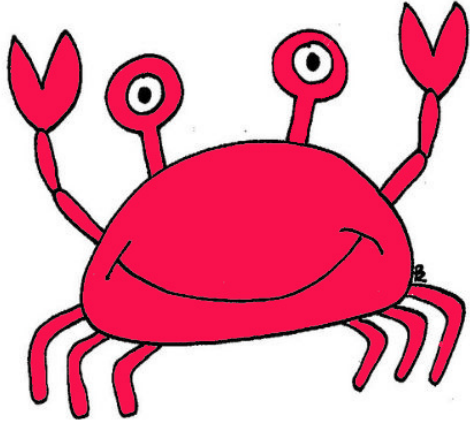
● Open Inno



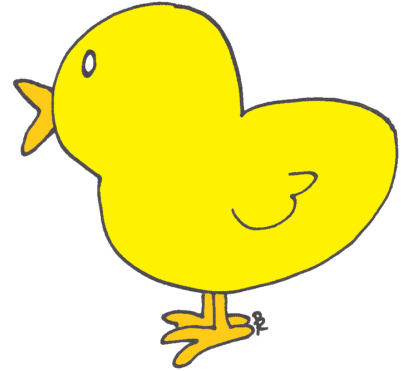
● Open Inno



● Open Inno



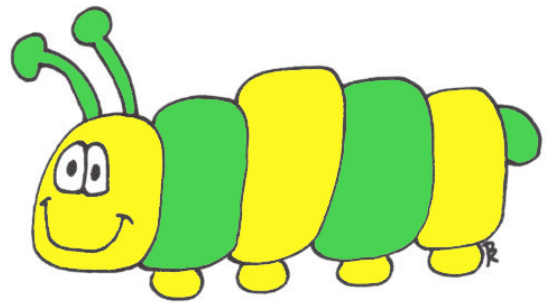
● Open Inno



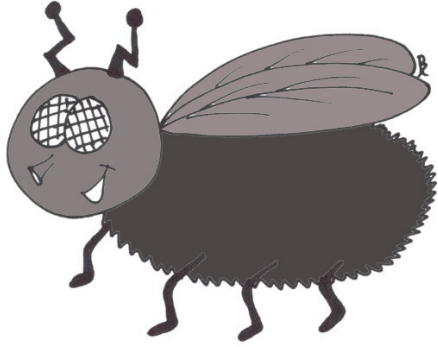
● Open Inno



● Open Inno



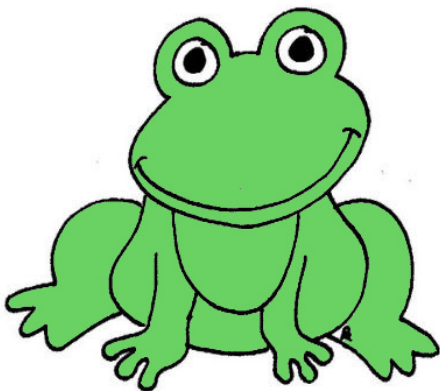
● Open Inno



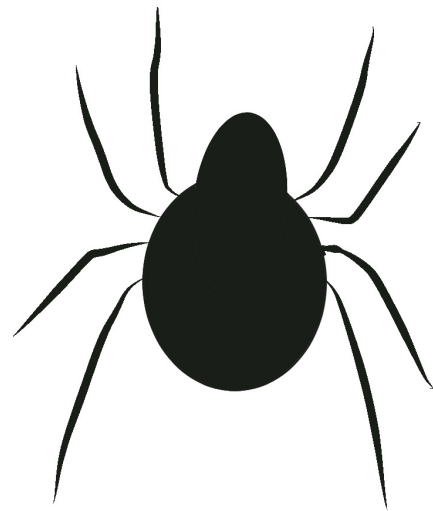
● Open Inno



● Open Inno



● Open Inno



● Open Inno